

Residual current operated circuit breaker, 2-pole, Type AC, In: 16 A, 30 mA, Un AC: 230 V



Model	
Product brand name	SENTRON
Product designation	RCCB
Design of the product	Instantaneous
General technical data	
Number of poles	2
Size of installation devices / acc. to DIN 43880	1
Protection against electrical shock	Finger and back-of-hand safe
Short-circuit current rating	10 kA
circuit-breaker / Design	5SV4
Mechanical service life (switching cycles) / typical	10 000
Switching function / short-term delayed	No
Overvoltage category	III
Supply voltage	
Current / at AC / rated value	16 A
<ul style="list-style-type: none"> • Supply voltage / at AC / rated value • Supply voltage / for testing equipment / minimum 	230 V 195 V

• rated value

50 Hz

Protection class

Protection class IP

IP20, if the distribution board is installed, with connected conductors

Switching capacity

Switching capacity current / according to IEC 61008-1 / rated value

0.5 kA

Dissipation

Power loss [W] / for rated value of the current / at AC / in hot operating state / per pole

0.4 W

Current

Tripping residual current / rated value

30 mA

Tripping residual / rated value / derated current

- at 40 Cel
- at 45 Cel
- at 50 Cel
- at 55 Cel
- at 60 Cel
- at 65 Cel
- at 70 Cel

16 A
16 A
16 A
16 A
16 A
16 A
16 A

Type of fault current

AC

I_{2t}-value / permissible

58 000 A²·s

Product details

Product feature / silicon-free

Yes

Product extension / can be installed / supplementary devices

Yes

Connections

Connectable conductor cross-section

- solid
- stranded

0.75 ... 35 mm²
0.75 ... 35 mm²

Tightening torque / with screw-type terminals

2.5 ... 3 N·m

Position / of power supply cord

top or bottom

Mechanical Design

Height

90 mm

Width

36 mm

Depth

70 mm

Installation depth

70 mm

Number of width units

2

Mounting type

DIN rail (REG)

Mounting position

any

Net weight	202 g
------------	-------

Environmental conditions

Ambient temperature	-25 ... +45 °C
• during storage	-40 ... +75 °C

Certificates

Reference code	
• acc. to DIN EN 61346-2	F
• acc. to DIN EN 81346-2	F

General Product Approval	Declaration of Conformity	other	Railway
--------------------------	---------------------------	-------	---------



CCC



IMQ

[Miscellaneous](#)



EG-Konf.

[Miscellaneous](#)

[Vibration and Shock](#)

Railway

[Confirmation](#)

Further information

Information- and Downloadcenter (Catalogs, Brochures,...)

<http://www.siemens.com/lowvoltage/catalogs>

Industry Mall (Online ordering system)

<https://mall.industry.siemens.com/mall/en/en/Catalog/product?mlfb=5SV4311-0>

Service&Support (Manuals, Certificates, Characteristics, FAQs,...)

<https://support.industry.siemens.com/cs/ww/en/ps/5SV4311-0>

Image database (product images, 2D dimension drawings, 3D models, device circuit diagrams, ...)

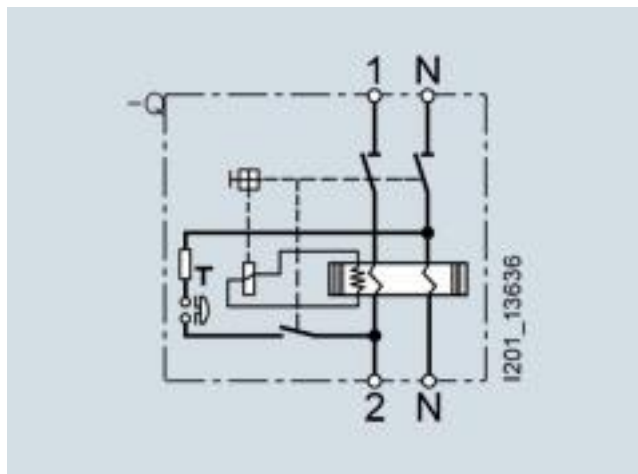
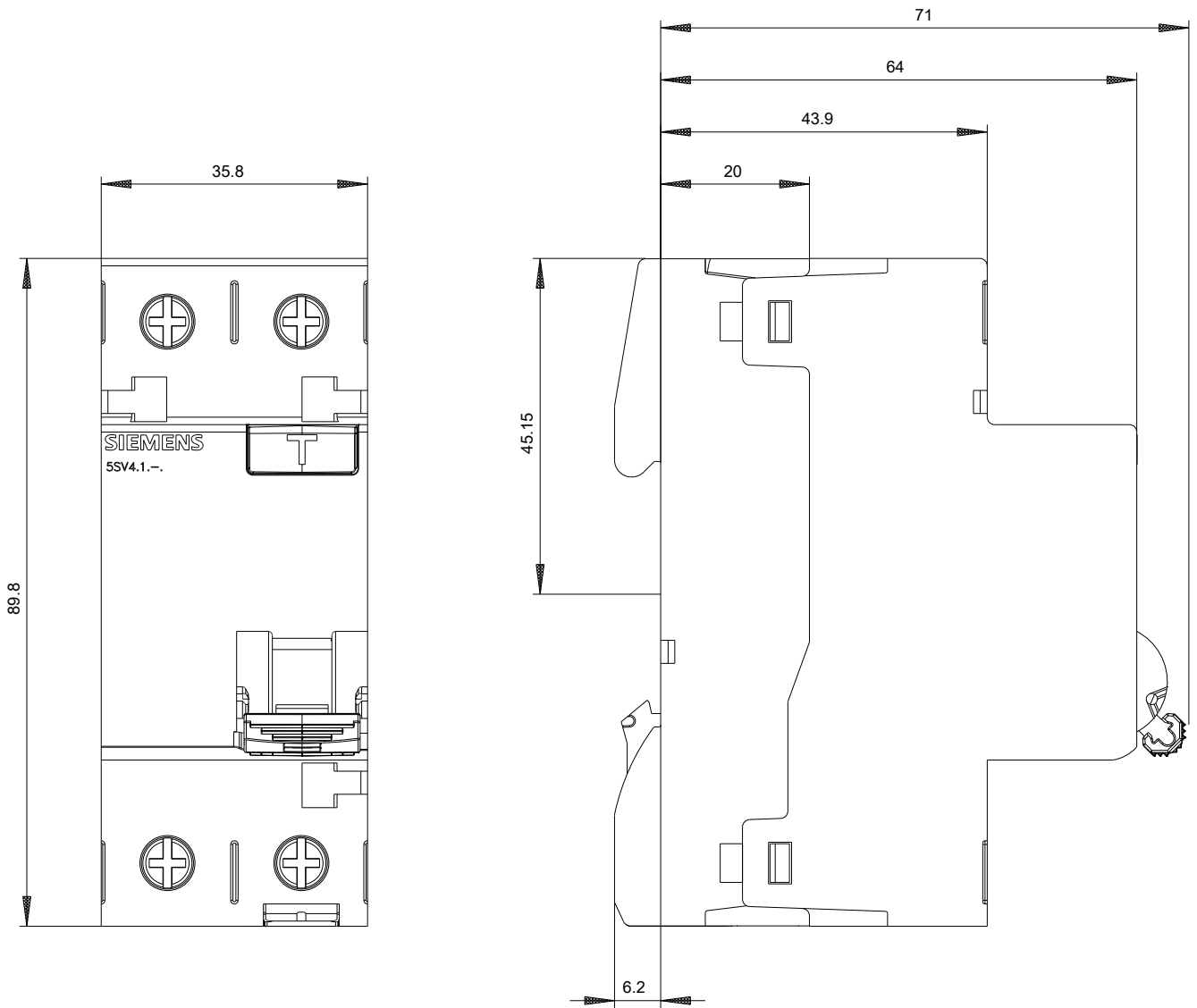
http://www.automation.siemens.com/bilddb/cax_en.aspx?mlfb=5SV4311-0

CAX-Online-Generator

<http://www.siemens.com/cax>

Tender specifications

<http://www.siemens.com/specifications>



Internal circuit diagram IEC

-CB

